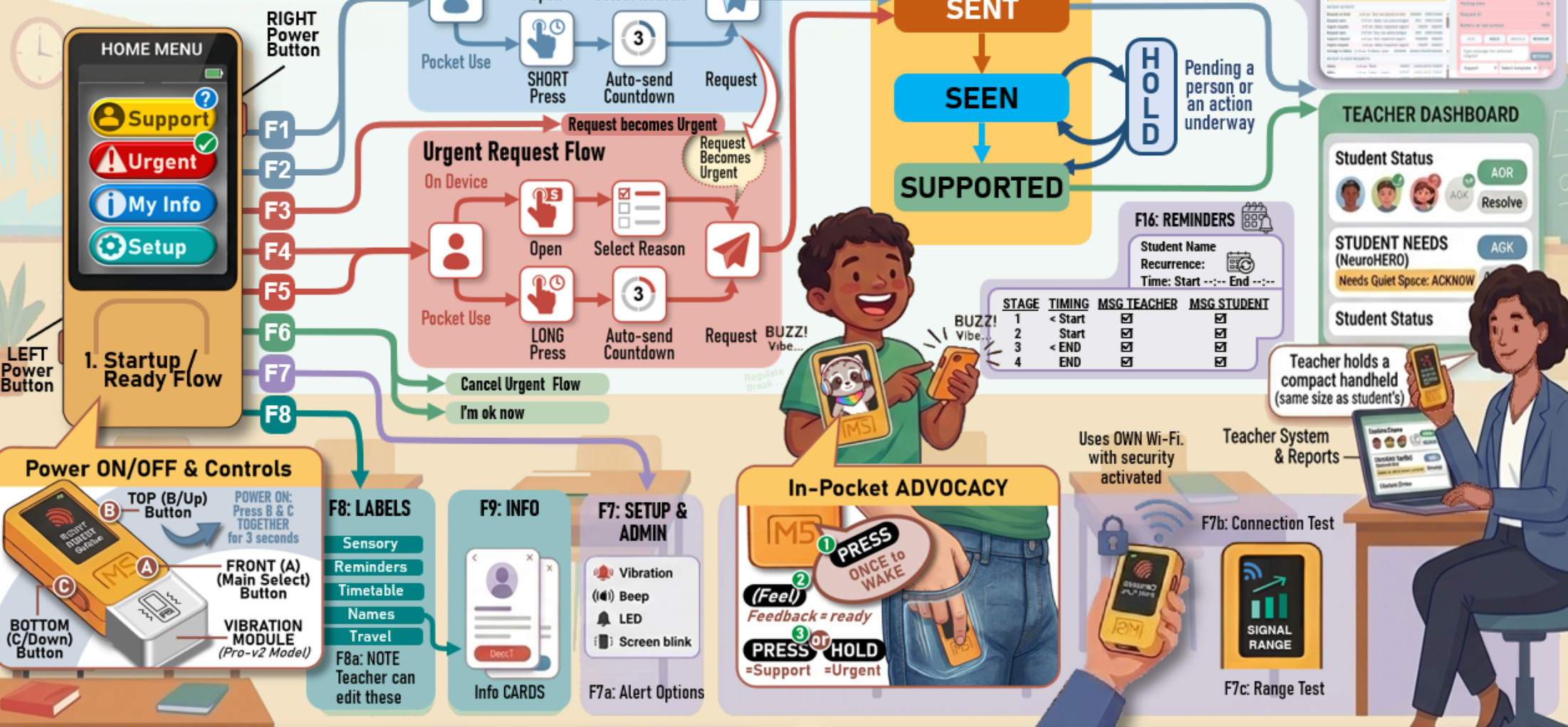


# NeuroHERO: Voice

## Core Workflows & Features

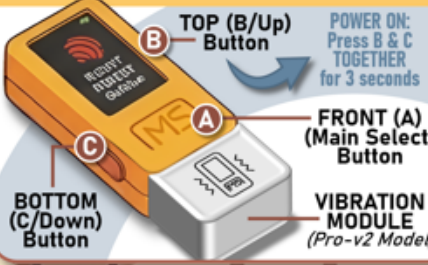
A Master Visual Flow Diagram



LEFT Power Button

RIGHT Power Button

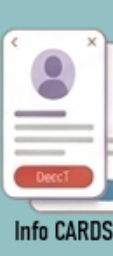
### Power ON/OFF & Controls



### F8: LABELS

- Sensory
- Reminders
- Timetable
- Names
- Travel
- F8a: NOTE Teacher can edit these

### F9: INFO



### F7: SETUP & ADMIN

- Vibration
- Beep
- LED
- Screen blink
- F7a: Alert Options

### In-Pocket ADVOCACY



Uses OWN Wi-Fi with security activated

Teacher System & Reports

### F7b: Connection Test



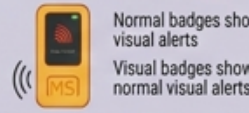
### F13: Power / Dim / Sleep flow



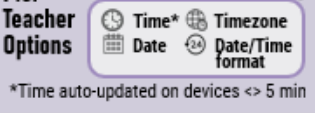
### F14: Battery Awareness



### F15: Status Indicator flow



### F10: Teacher Options



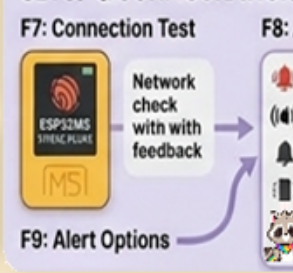
### F10b: Student Characters



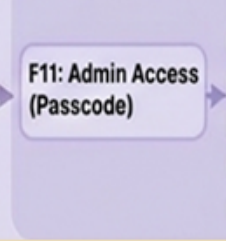
### F9: Alert Options



### SETUP & CONFIGURATION



### F11: Admin Access (Passcode)



### F12: Admin Setting Edit Flows

